



CONNECTING A SCUBAPRO® GALILEO 2 (G2), ALADIN SPORT MATRIX OR ALADIN H MATRIX TO LOGTRAK VIA BLUETOOTH® LOW ENERGY



From a PC equipped with Windows 8 (and higher) Operating System

1. Install LogTRAK 1.4.0.0 [or higher] as an administrator
2. Enable your integrated Bluetooth 4.0 [or higher] module or plug in a generic Bluetooth 4.0 [or higher] USB adapter.

Note:

Integrated Bluetooth 3.0 modules may cause issues in the connection between your PC and your dive computer. Make sure to disable any integrated Bluetooth 3.0 module before connecting your dive computer to your PC. More information on how to disconnect Bluetooth 3.0 module can be found in the “Connectivity” section of LogTRAK help.

3. Open your PC Bluetooth connection manager to pair your PC with your dive computer.
 - ♦ Turn on Bluetooth on your PC
 - ♦ Switch on your dive computer
 - ♦ Go to the Bluetooth menu of your dive computer and activate Bluetooth pairing mode

[Please refer to your dive computer’s user manual for more details on how to activate Bluetooth pairing mode]

 - ♦ Click on “Pair” when your dive computer is detected

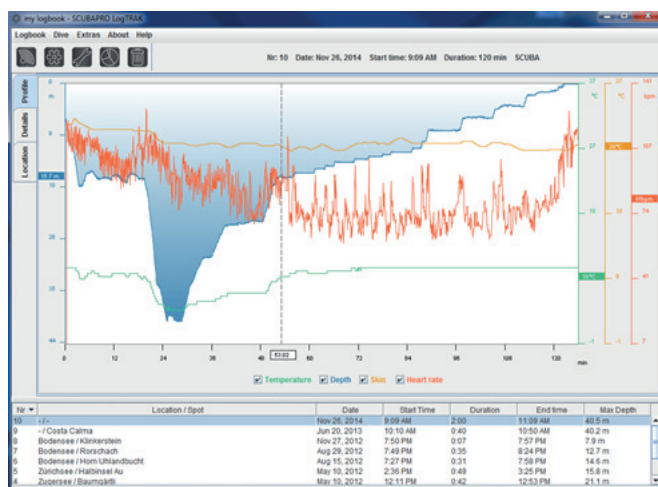


- ♦ Enter the 6 digit pin code shown on your dive computer display and click “Next”

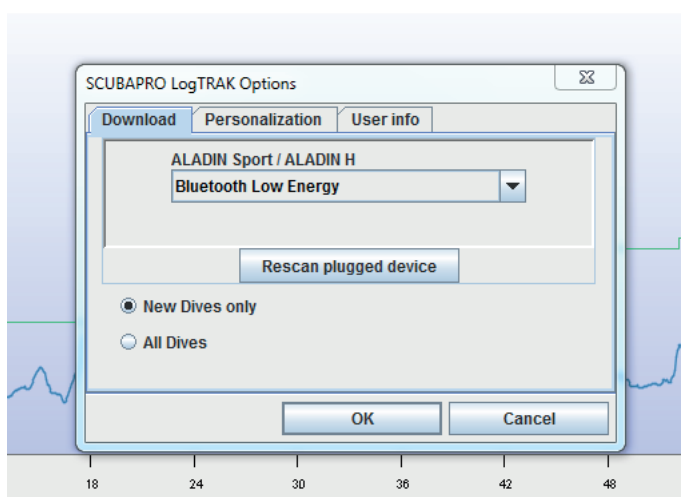
4. Start LogTRAK on your PC



SCUBAPRO



5. Use the menu “Extras”, “Options...” or click on the icon




6. On the “Download” tab, select “Bluetooth Low Energy” and click the “OK” button


Note:

Unless you modify it, this becomes the default setup and you won't need to repeat steps “5” and “6” the next time you use LogTRAK.



7. Switch on your dive computer
8. Go to the Bluetooth menu of your dive computer and activate Bluetooth pairing mode [Please refer to your dive computer's user manual for more details on how to activate Bluetooth pairing mode]
9. On LogTRAK, use menu "Dive", "Download dives" or click on the icon 
10. LogTRAK will start downloading dives from your dive computer.

Note:

If your dive computer is connected to your PC, you will see the connection symbol on your dive computer display. 

Troubleshooting:

Even if you have successfully paired and connected your dive computer to the LogTRAK app, a later connection can sometimes fail, for example after an update of the PC operating system. If this happens, remove your dive computer from the list of Bluetooth devices paired with your PC device. [It will delete the pairing information stored on your PC device]. Repeat the above process starting from point "3" to pair your dive computer with your PC device again.